



The Ridgeway Court, North Chingford, E4 6QN

PCM  
£1,600 PCM

 **Coultons**



## PROPERTY SUMMARY

We are pleased to offer this charming 2 bedroom apartment located on The Ridgeway in Chingford, boasting a spacious reception room, two cosy bedrooms, a well-maintained bathroom, an allocated parking space and close proximity to the Overground station as well as local amenities. Offered unfurnished, this property is available from late August.

2



1



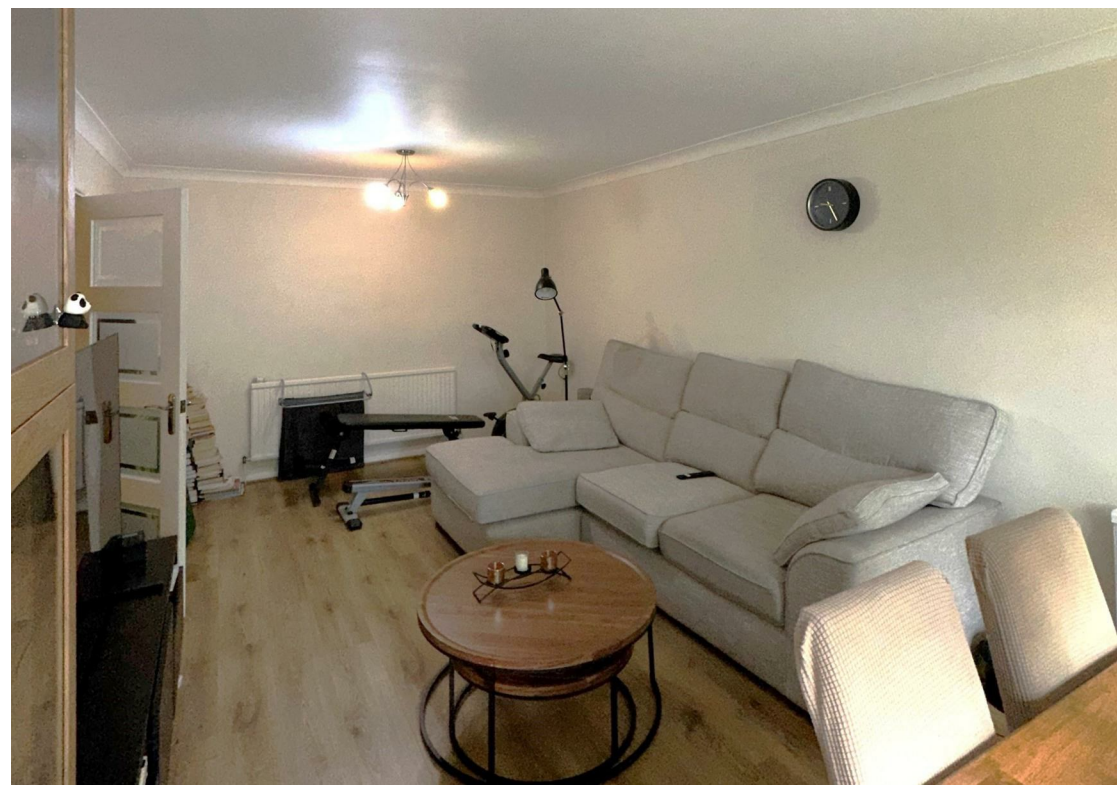
1
















**LOCAL AUTHORITY**  
Waltham Forest

**TENURE**

**COUNCIL TAX BAND**

**VIEWINGS**  
By prior appointment only

Energy Efficiency Rating		
	Current	Potential
Very energy efficient - lower running costs		
(92 plus) A		
(81-91) B		
(69-80) C		
(55-68) D		
(39-54) E		
(21-38) F		
(1-20) G		
Not energy efficient - higher running costs		
England & Wales		EU Directive 2002/91/EC 

Agents Note: Whilst every care has been taken to prepare these particulars, they are for guidance purposes only. All measurements are approximate and are for general guidance purposes only and whilst every care has been taken to ensure their accuracy, they should not be relied upon and potential buyers/tenants are advised to recheck the measurements



**OFFICE ADDRESS**

26 Station Road  
North Chingford  
London  
E4 7BE

020 8090 0860  
sales@coultons.co.uk  
www.coultons.co.uk

**OFFICE ADDRESS**

425a Lordship Lane  
Wood Green  
London  
N22 5DH

020 3869 8989  
sales@coultons.co.uk  
www.coultons.co.uk